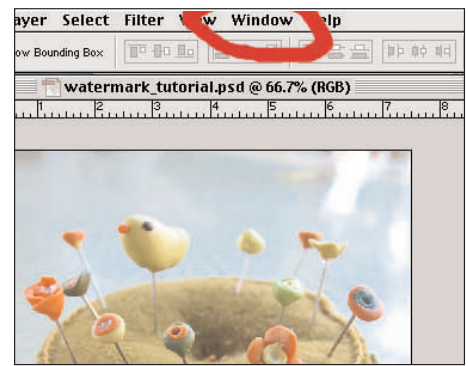


How to Make a Watermark in Photoshop

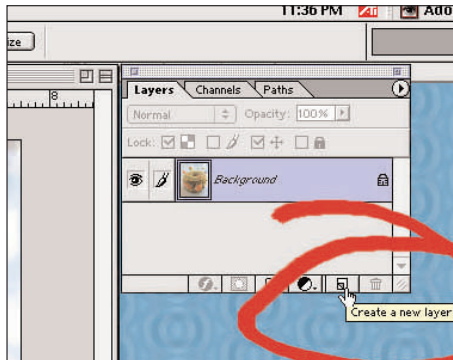
by Michelle Russell

By using layers in Photoshop and manipulating them with different effects you can make a watermark on any photo. Watermarks can help identify the owner of the image and hopefully deter any would-be thieves. This example shows a typographic watermark, but you could also use an image if you prefer.

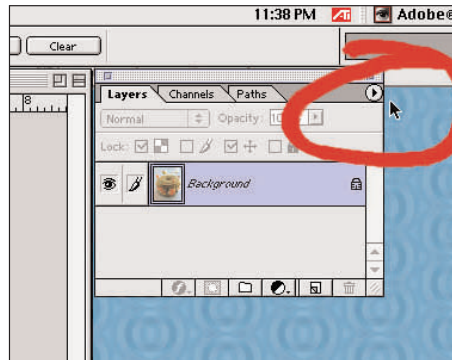


Open image in Photoshop. Pull down the Window Menu and choose "Show Layers."

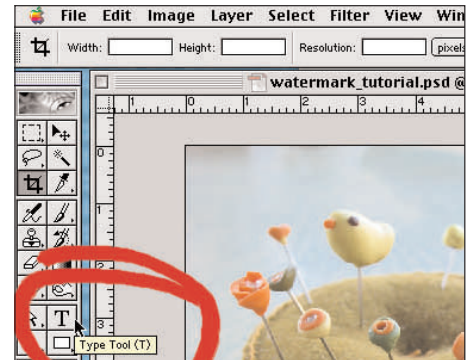
Step 1: Make a Layer



In the Layers Menu click on the "Create a new layer" icon to add a layer.



Alternately you can pull down the arrow menu on the top right of the Layers Menu to find an "Add Layer" option.

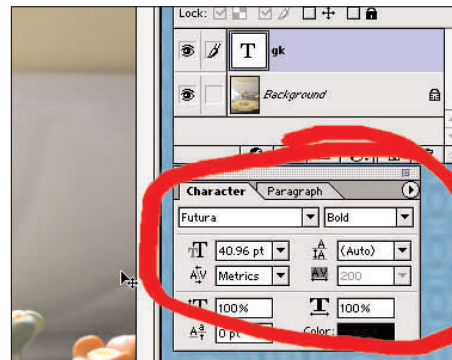


Or, just start using the Type Tool and it will create a layer for you.

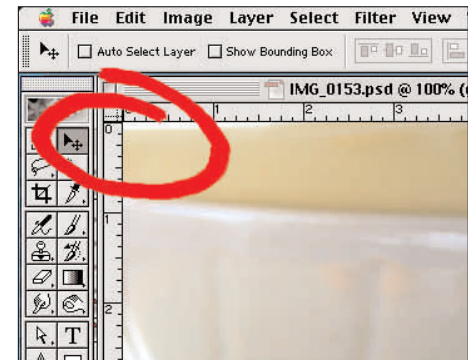
Step 2: Make Watermark



Click on the Type Tool and place cursor over image. Start typing. Choosing an extra bold typeface will make it difficult for someone to remove the watermark.

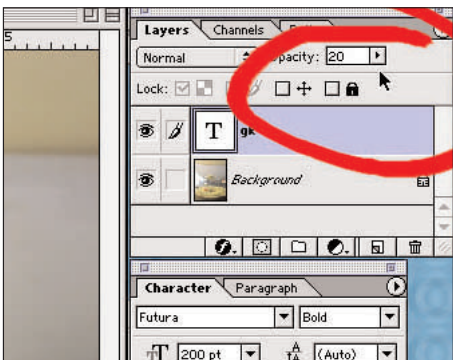


To change font size, typeface, color, etc. pull down the Window Menu and choose "Show Character." Notice the new layer takes the name of whatever you type, in this case "gk."

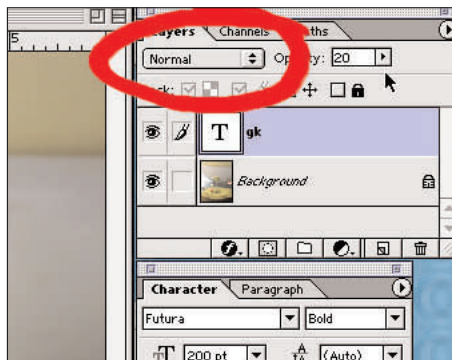


Use the arrow tool to move watermark around, finding a place that covers enough of the image to deter someone from trying to remove it.

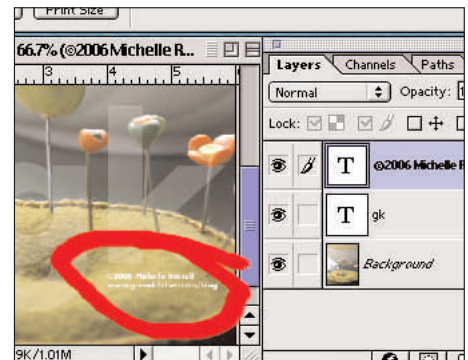
Step 3: Layer Effects



In the Layers Menu change the opacity of your watermark. Twenty percent usually works, if not, try some of the layer effects in same menu.



To use the layer effects pull down where it says, "Normal." Choose "Multiply," "Screen," or "Overlay," adjusting opacity until finding the desired effect.



Make a new layer if you want to add another element to your watermark, like a copyright or URL. Note: you can only work on a layer if it is activated by clicking on it.